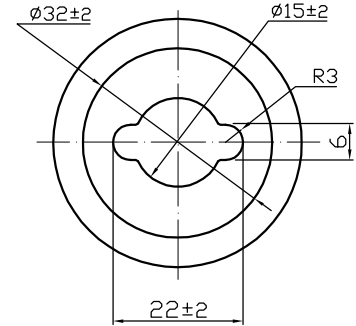
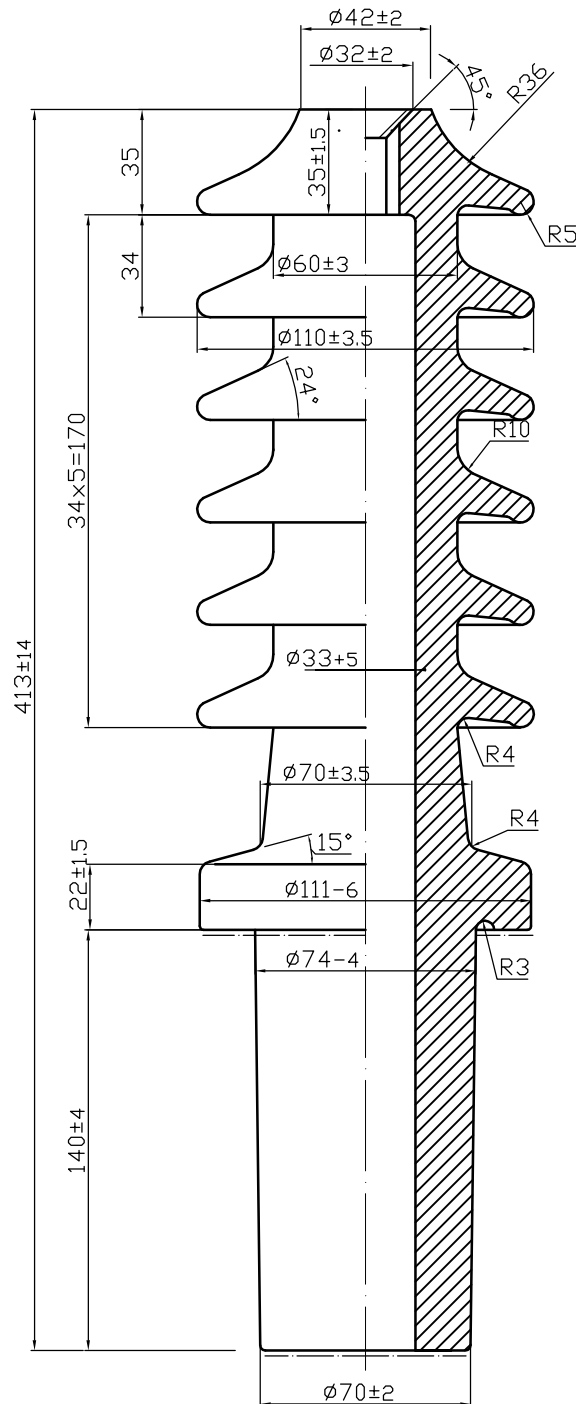


16. 24NF 300



TECHNICAL DATA

Specification Applied : DIN 42531

Characteristics	Rating
1. Voltage rating (KV)	24
2. Rated current (A)	300
3. Power frequency withstand voltage, Wet (KV)	50
4. Lightning impulse withstand (KV)	125
5. Nominal creepage distance (mm)	480
6. Weight (Kg)	4.0
7. The enamel is Brown	
8. Identification marking	